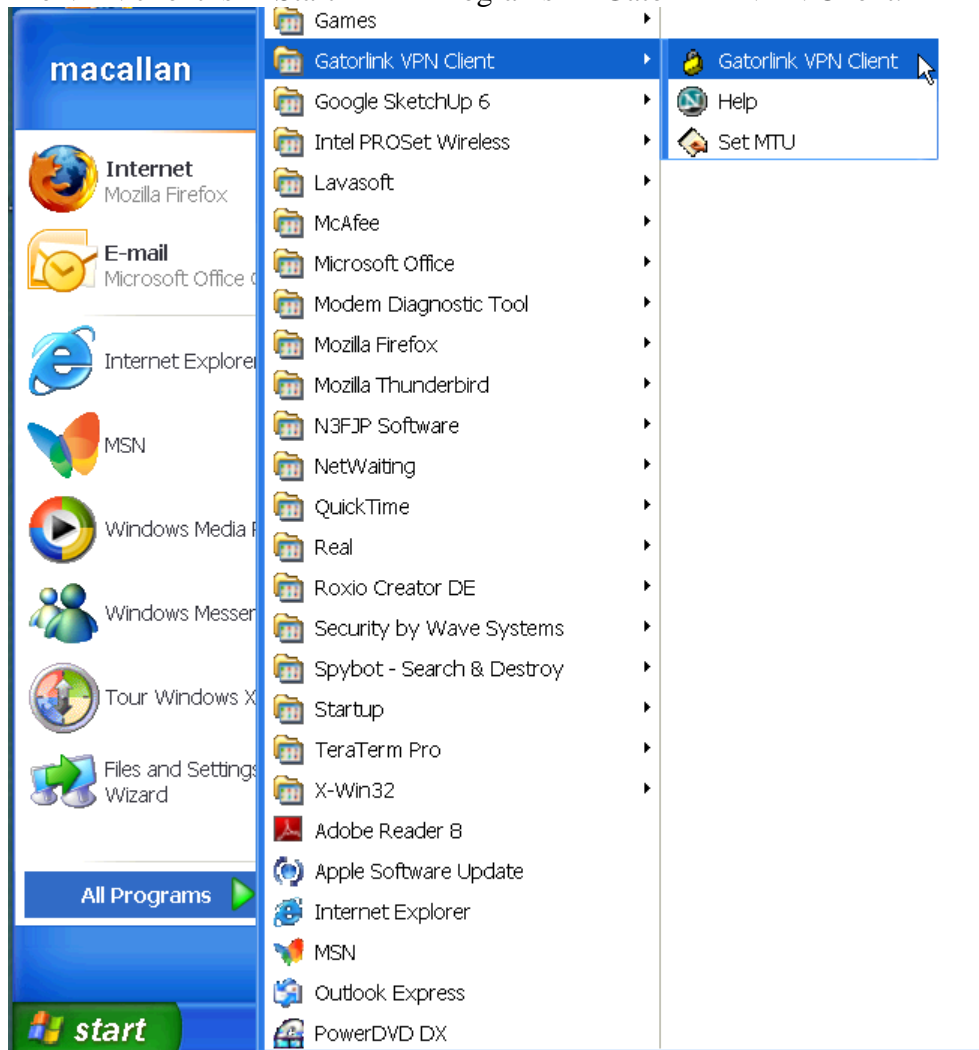


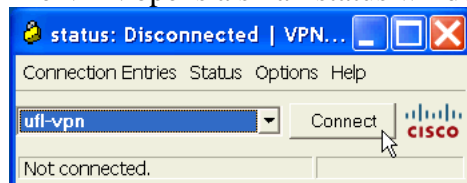
VPN Client:

To connect from your Windows computer to the Share drive, first start the VPN client so that your machine gets a campus IP address.

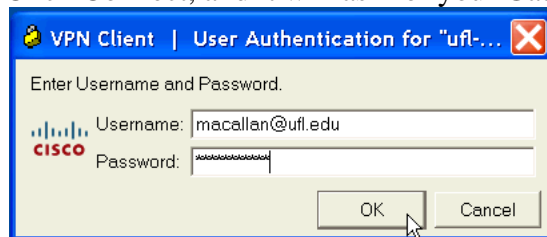
The VPN client is in Start → All Programs → GatorLink VPN Client:



The VPN opens a small status window



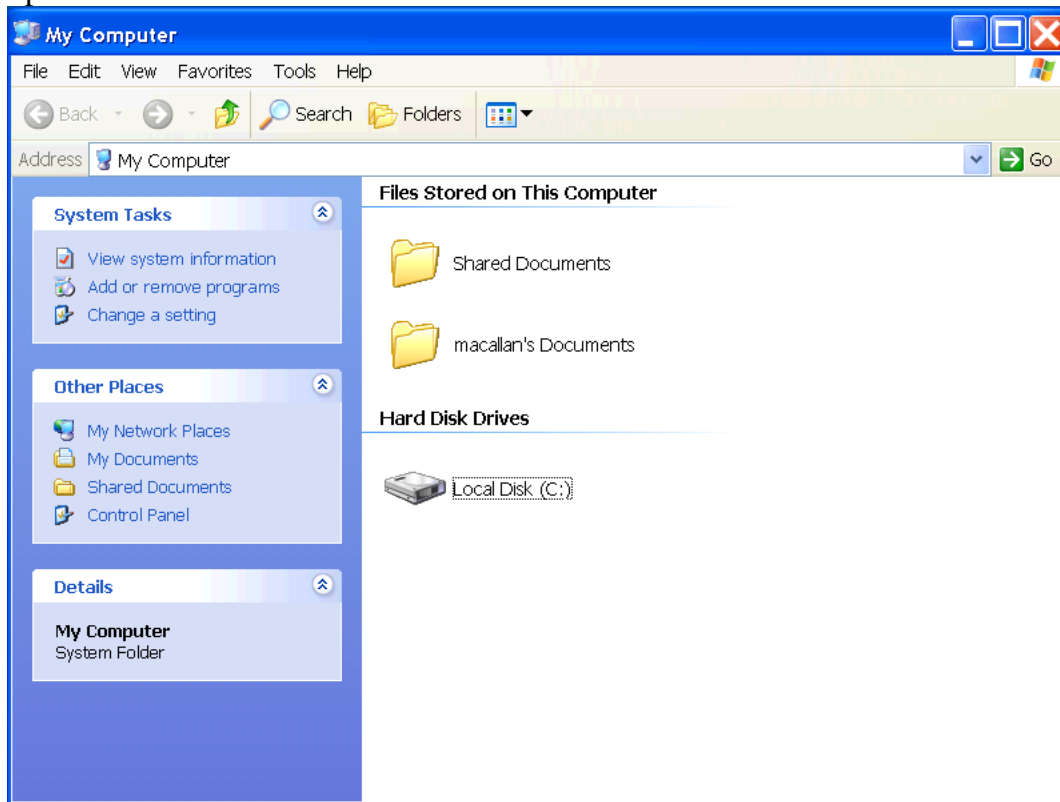
Click Connect, and it will ask for your GatorLink username and password



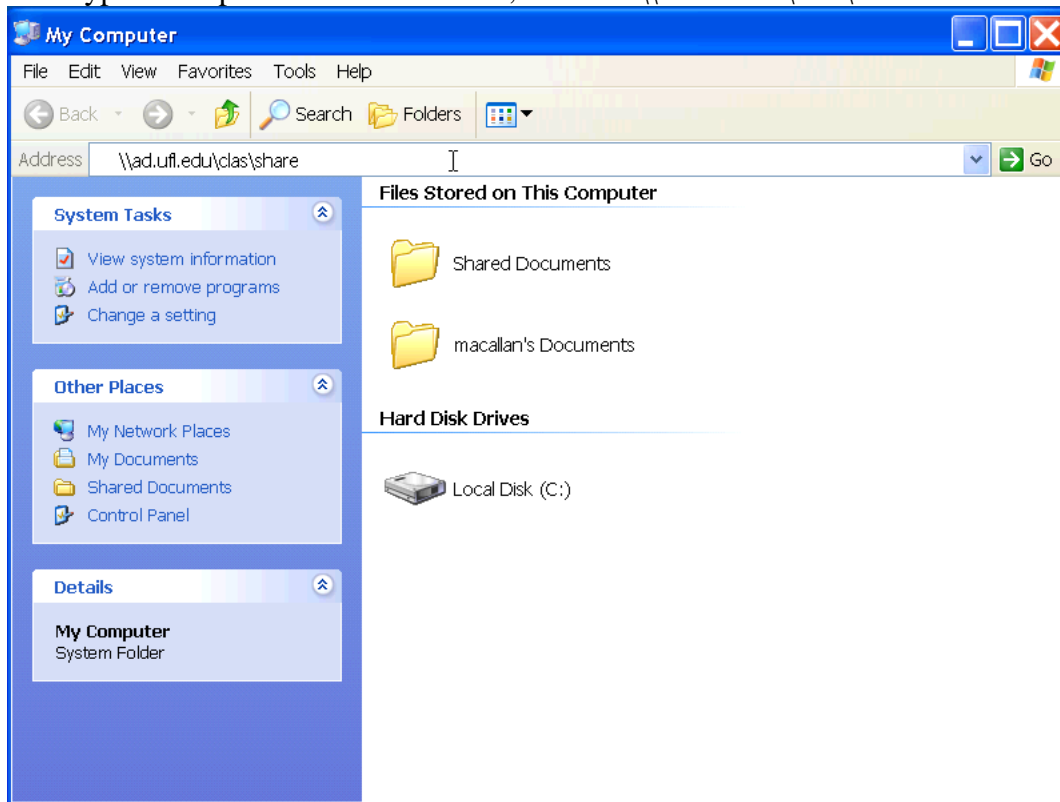
After it connects, the windows will hide, and there will be a closed yellow padlock icon on the task bar.

Departmental Share:

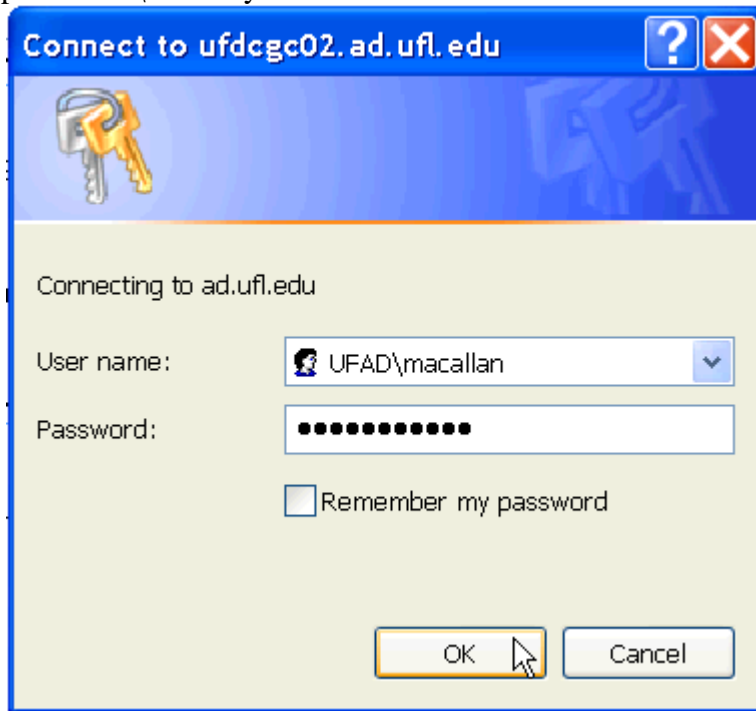
Open a new window



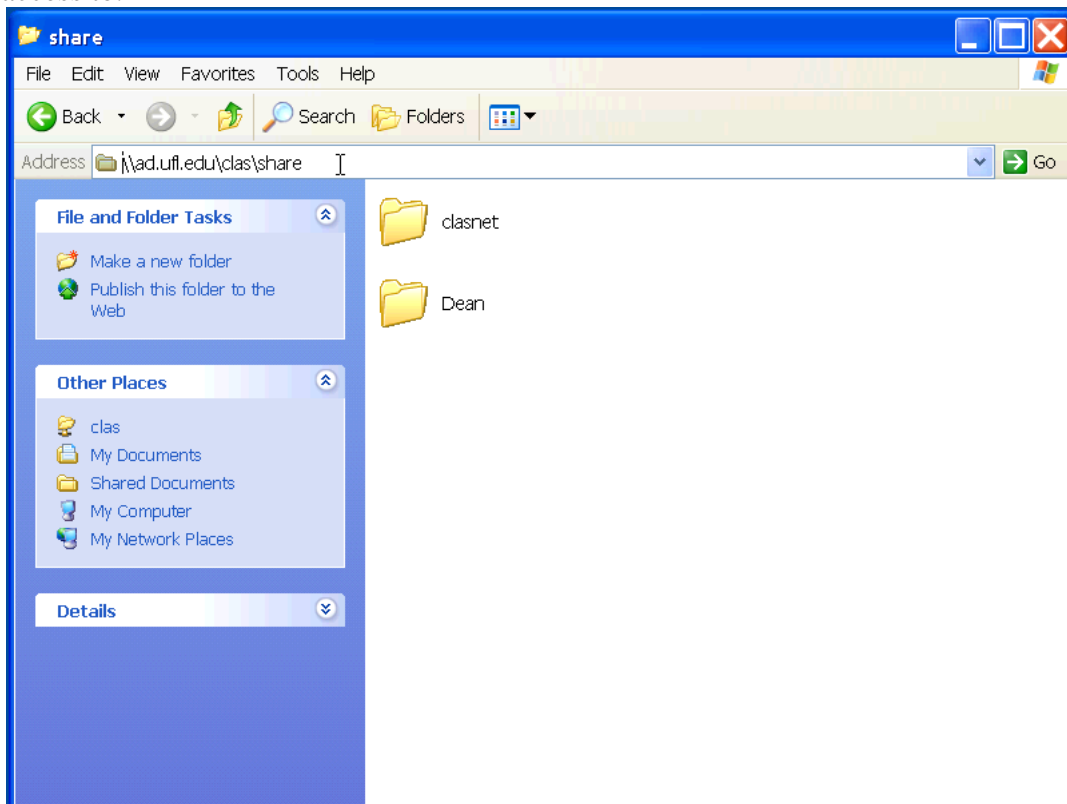
Then type in the path to the Share drive, which is `\\ad.ufl.edu\clas\share`



Hit return and wait a moment for the authentication box. Then the authentication window will appear. Type in your GatorLink username and password and click OK. Be sure to put UFAD\ before your username

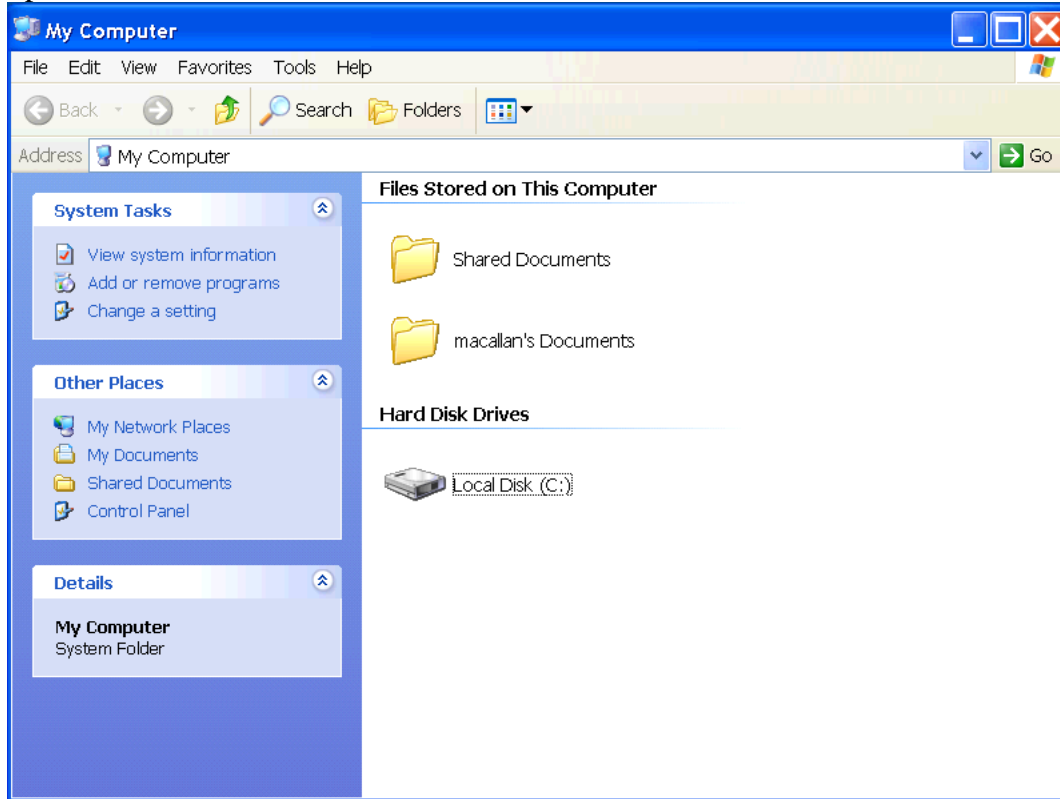


The Share window will appear, and display all of the share folders your account has access to.

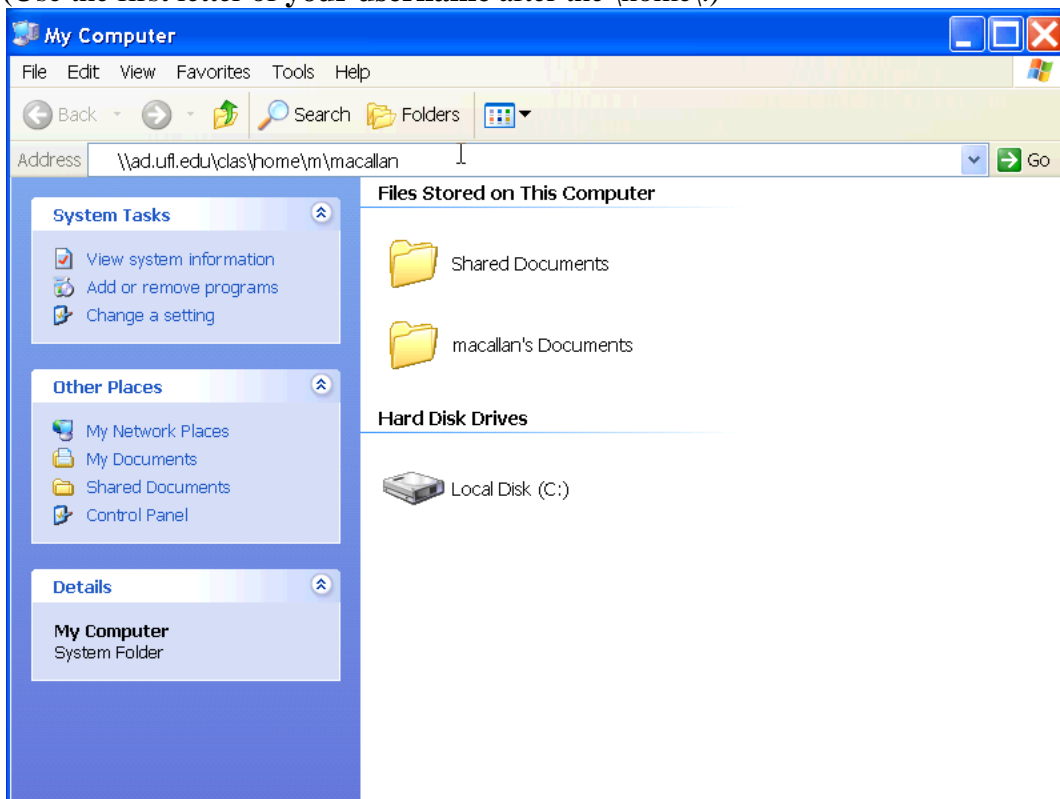


Personal Home:

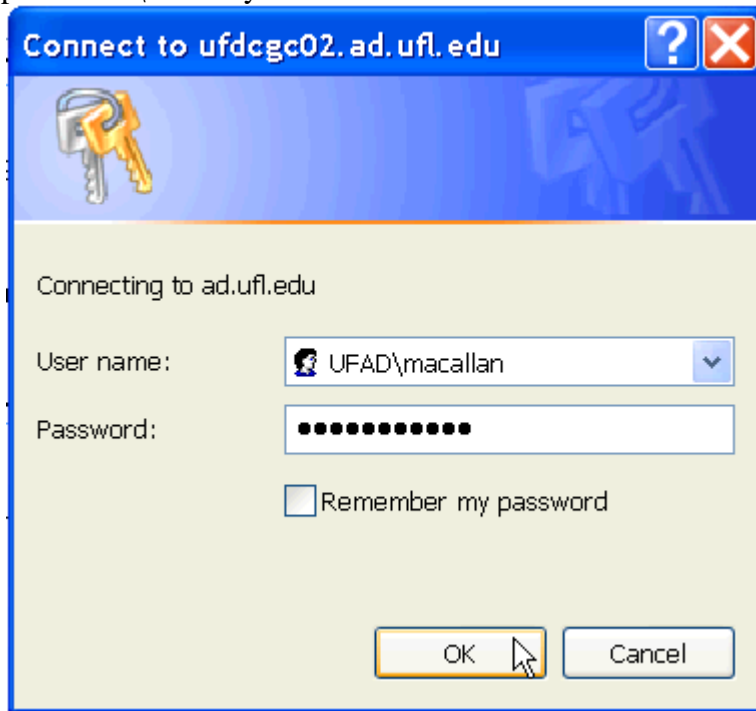
Open a new window



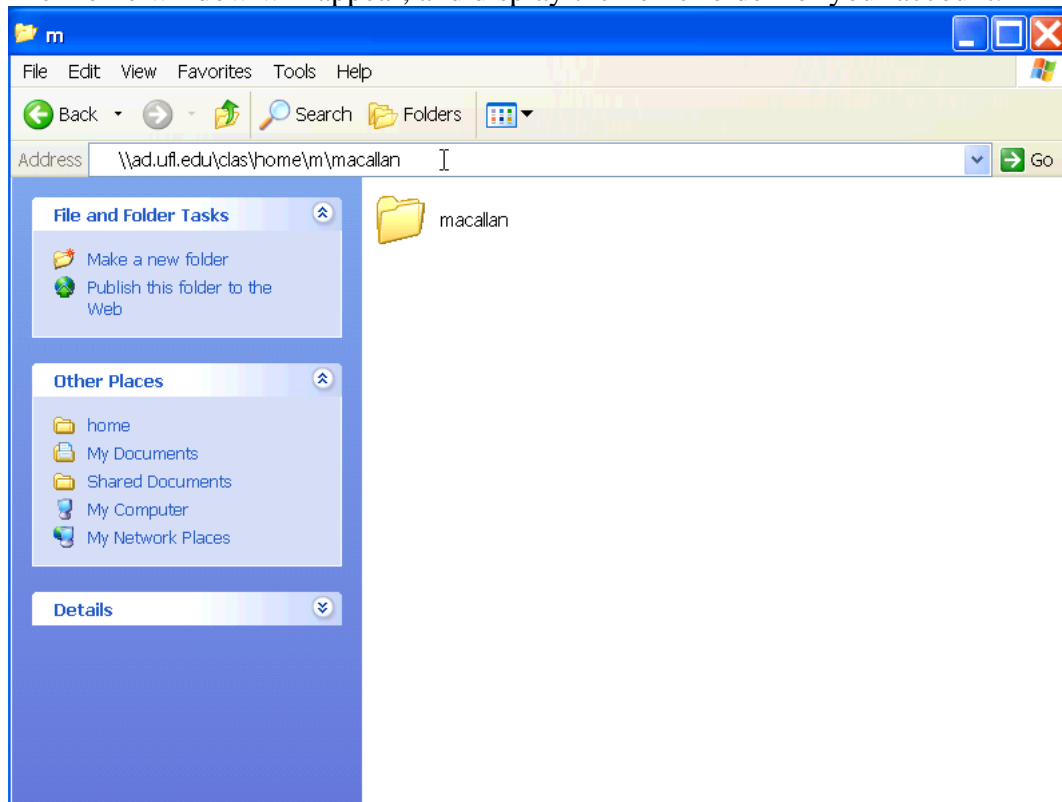
Then type in the path to the Home drive, which is `\\ad.ufl.edu\clas\home\m\macallan`
(Use the first letter of **your** username after the `\home\.`)



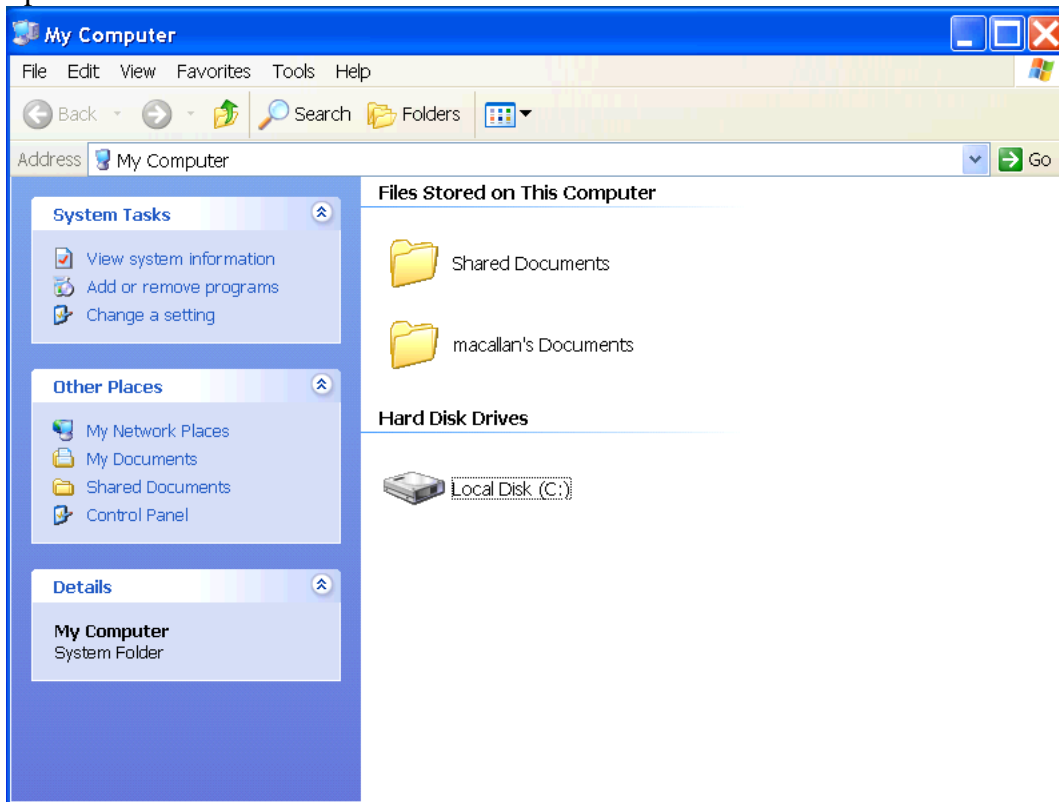
Hit return and wait a moment for the authentication box. Then the authentication window will appear. Type in your GatorLink username and password and click OK. Be sure to put UFAD\ before your username



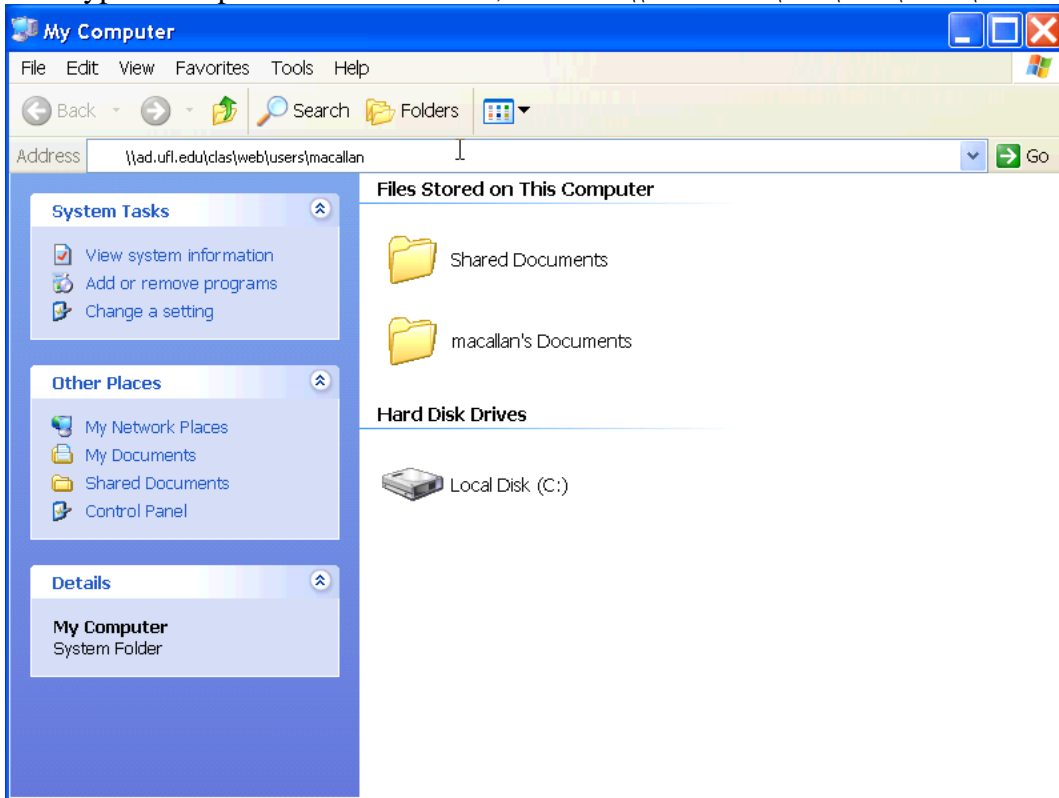
The Home window will appear, and display the home folder for your account.



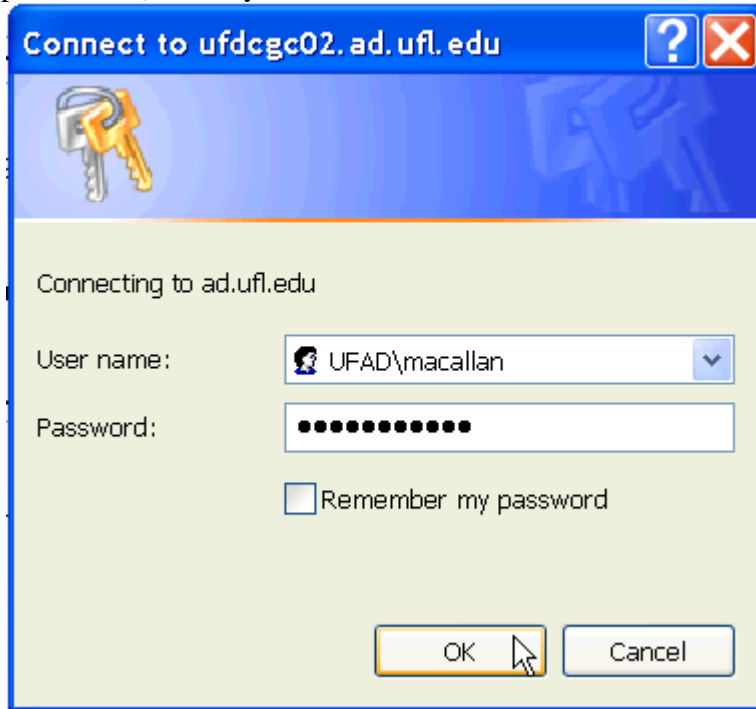
Personal Web: Open a new window



Then type in the path to the Web drive, which is \\ad.ufl.edu\clas\web\users\macallan



Hit return and wait a moment for the authentication box. Then the authentication window will appear. Type in your GatorLink username and password and click OK. Be sure to put UFAD\ before your username



The Web window will appear, and display your individual web files.

